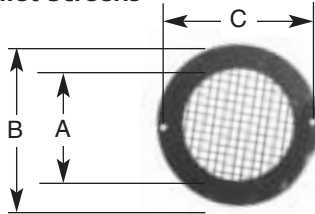


## BLOWER ACCESSORIES

### Inlet Screens



**4004**  
A = 3.125  
B = 4.50  
C = 4.188

**4000**  
A = 4.72  
B = 6.125  
C = 5.75

### INLET 4004

for Air Rotors of less than 3 7/8" diameter Inlet 4004 can be used on the following blowers:

50746-D500, 50747-D230, 50747-D401, 50747-D500, 50747-D600, 50748-D500, 50748-D700, 50752-D230, 50752-D500, A069, A071, A073, A075, A081, A083, B23617, B23618

Packaged one per kit

### INLET 4000

for Air Rotors of 4" to 5 1/2" diameter Inlet 4000 can be used on the following blowers:

50755-D230, 50755-D500, 50756-D230, 50756-D500, 50757-D500, A159, A161

Packaged one per kit

### Blower Flanges

Any flange below may be used on blower models 50747-D600, 50748-D700, B23617, B23618, A073, A081.



Flange **KIT280**  
Mtg. Hole Dia. .281"  
Packaged one per kit

Flange **KIT282**  
Mtg. Hole Dia. .136"  
Packaged one per kit



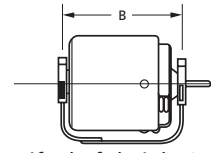
Flange **KIT284**  
Packaged one per kit

## RESILIENT MOTOR BASES



Extra Base Clamps  
**CLAMP6004**

Two base clamps ship with each base.



-specify shaft height 3.00" or 3.50" and motor model.

## RESILIENT MOUNTING BASE INDEX

Fasco Model No.	Recomm. Base	Fasco Model No.	Recomm. Base	Fasco Model No.	Recomm. Base	Fasco Model No.	Recomm. Base	Fasco Model No.	Recomm. Base
D112	517*	D333	354*	D717	558*	D831	705*	D970	558*
D117	386	D336	435	D718	479	D834	479	D971	517*
D148	354	D337	435	D721	461	D838	558*	D972	479
D150	492*	D338	492	D723	492	D839	558*	D973	461
D151	492*	D339	492	D725	461	D840	479	D975	461
D154	558	D347	386	D726	558*	D846	558*	D981	492*
D156	461*	D354	479	D727	479	D860	595*	D1002	435*
D158	479	D356	408	D728	595	D866	558*	D1014	408
D160	461	D382	386	D729	595	D869	461	D1015	408
		D434	517*	D730	595	D870	542	D1016	479
D164	461*	D435	517*	D732	517*	D877	435	D1018	479
D166	461*	D480	542	D733	479	D879	479	D1033	461
D174	408	D481	542	D735	558*	D891	517*	D1042	492
D178	408	D482	479	D737	492*	D896	435	D1061	492
D224	435	D483	479	D739	479	D897	435	D1065	408*
D236	408	D484	479	D745	558	D902	558*	D1086	408*
D245	542	D485	479	D746	492*	D910	595	D1745	558
D247	479	D486	517*	D747	517*	D911	558	D1748	461
D249	354	D487	517*	D748	461	D912	479	D1749	461
D250	408	D490	558	D780	492*	D913	479	D1853	479
D252	354	D491	558	D782	479	D915	595	D1910	595
D253	354	D492	558	D783	461	D916	595	D1911	558
D254	408	D493	558	D784	558	D918	479	D2816	NONE
D255	408	D494	492	D785	517*	D920	595	D2817	595*
D256	461*	D495	492	D786	595	D923	479	D2818	NONE
D257	408	D496	517*	D787	479	D924	479	S2846	705
D258	435	D497	517*	D788	558	D926	479	S2848	NONE
D260	479	D635	408	D804	705	D927	435	S156	435
D264	408*	D655	408	D807	435	D928	435		
D277	479	D656	461*	D812	479	D929	558*		
D290	408*	D658	479	D814	435	D930	558*		
D312	492	D701	558*	D816	461	D935	558		
D314	517*	D703	558	D818	NONE	D937	461		
D316	461*	D710	492*	D825	705*	D939	461		
D329	408	D711	595			D951	558*		

Cradle Base "B" Dimension	3 1/2" Base No.	3" Base No.
3.54	35-354	30-354
3.86	35-386	30-386
4.08	35-408	30-408
4.17	35-417	-
4.35	35-435	30-435
4.61	35-461	30-461
4.79	35-479	30-479
4.92	35-492	30-492
5.17	35-517	30-517
5.42	35-542	30-542
5.58	35-558	30-558
5.95	35-595	30-595
7.05	35-705	30-705



**P/N 35-417**

**NOTE:** The current base numbering system is: First two numbers indicate shaft height (30 is 3.0" and 35 is 3.5" shaft height). Last three numbers represent distance between cradle arms (386 is 3.86" - 35-386 is 3 1/2" shaft height and 3.86" B dimension). To achieve the shaft height listed, the 2 1/2" diameter rings must be used.

For motors not listed : Add .8 to "A" dimension of 4 7/16" diameter motors for base "B" dimension  
Add .9 to "A" dimension of 5" diameter motors for base "B" dimension  
Add .5 to "A": dimension of 5 5/8" diameter motors for base "B" dimension

\*May need to reverse one or more mounting rings