

Goodbye 2009, Hello 2010...

And hello to a brand new Fasco Rewards Program!

There's no question that 2009 was a challenging year for many of us. But we've made it through a tough 12 months, and now we're looking forward to better times in 2010!

All of us at Fasco would like to take this opportunity to thank our valued distributor personnel for your continued business with us. It is because of you that we are able to get our products into the hands of your customers...and we thank you for continuing to be that vital link in our sales chain.

Here's to a prosperous new year for you and your family!

Coming soon: your new Fasco Rewards Program!

More information on our new Rewards Program will be available soon...and complete details will be provided in your January newsletter.

Address Change Note

We no longer have a post office box, so please use the following Fasco mailing address: 1401 East North Street, Eldon, MO 65026.

Answers to November's Fasco Rewards Test

1. C — 4715
2. A — Aluminized
3. D — D882
4. B — 500°
5. A — True
6. B — Heat and moisture
7. C — 10 to 100
8. D — D156
9. D — All of the above
10. A — True

2009 New Product Recap

Fasco Broadens Product Line With Wide Variety of New Introductions in 2009

Here's a quick review of the various products we've introduced throughout 2009. As always, for any questions or more information on these and other Fasco products, just contact your Fasco Sales Representative or call our Customer Service Department at 1-800-325-8313.

Four Direct Replacement Draft Inducers

These C-Frame OEM direct replacements are single-speed, 3000 RPM, with open enclosures and ball bearings.



HP 1/50
Volts 115
Amps 1.22



HP 1/20
Volts 115
Amps 2.6



HP 1/30
Volts 120
Amps 1.27

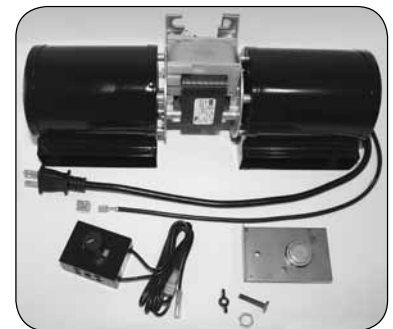


HP 1/60
Volts 120
Amps 1.15

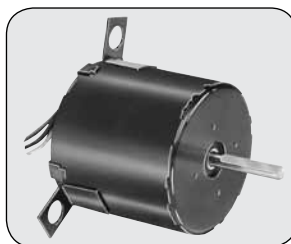
FASCO STOCK #	FASCO MFG #	DUPLICATED PART #	OEM/MODEL
A065	7058-1392	JAKEL 119276-00	Goodman 0131M00002P
A066	7058-1406	JAKEL 117847-00	Rheem 70-24157-03
A067	7058-1404	JAKEL 119255-00	ICP 1014338
A068	7058-1405	JAKEL J238-8171	Lennox 88K8401

B160 Blower System

Designed to enhance heat output from home fireplaces, the B160 operates on a 115 VAC, 60 Hz power supply that's accessible through a receptacle in the factory-installed junction box. It features a variable speed control that provides forced airflow at the desired speed, plus a temperature sensor switch to turn the blower automatically on and off. 1/60 HP, 3000 RPM, 1.56 amps.



D1129 PSC Replacement Motor



This PSC version of our popular D1189 SP motor can offer up to 50% more efficiency. It's 3.3" diameter, totally enclosed, 1/20 HP, 115/230 volts, 1550 RPM, .70/.35 amps, CW rotation, ball bearings and single speed. The D1129 replaces the following Krack Refrigeration models: 11528, 11529, JB2P046N, JA2P216N, JA2P217N, JB2P047N, 8354110940, and 8254111030.

2009 New Product Recap (cont.)

Life-Line Capacitor Kit

This all-in-one replacement kit meets both single and dual run capacitor needs. In addition to many single capacitor ratings, this kit has been designed to cover 48 of the most common dual ratings in both 370 VAC and 440 VAC applications. It was also created to save your customers time and money by giving them everything they need to select, wire and mount replacement capacitors in one convenient kit.



The new Life-Line Capacitor Kit (LCKP-001)

The Life-Line Capacitor Kit includes...

- 6 PROLINE™ Capacitors
- 2 Life-Line “Spider” Devices
- 1 Capacitor Mounting Hardware Kit
- 1 Device Mounting Hardware Kit
- 1 Heavy-Duty Carrying Case

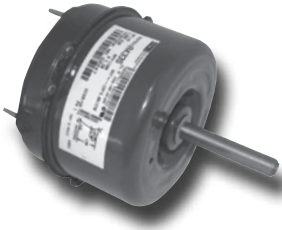
“Cap-Can” Motors

This line of air-moving motors featuring “cap-can” construction is designed for use in residential outdoor condenser fan and heat pump units, primarily up to 3.5 tons.

These new 5" diameter, single speed, continuous duty “cap-can” motors were created for vertical shaft down applications with either flange or extended stud mounting. They are designed for use with a 370-volt capacitor (not included), and offer CW or CCW rotation in several ratings.

“Cap-Can” motor benefits include:

- Permanent Split Capacitor (PSC), Totally Enclosed Air Over (TEAO) construction
- Automatic thermal overload protection
- Ball bearings
- Class B insulation
- Water slinger on the shaft

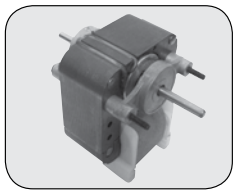


“Cap-Can” Motors for Residential Outdoor Condenser Fan and Heat Pump Units

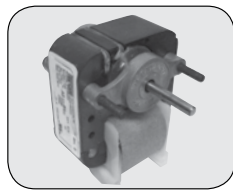
FDC #	HP	RPM	VOLTS	ROT	FLA@NP	C DIM
G2243	1/10	1100	208-230	CWLE	0.74	6.10
G2248	1/8	1075	208-230	CWLE	0.86	6.10
G2249	1/8	1075	200-230	CCWLE	0.75	6.10
G2247	1/6	1100	200-230	CCWLE	1.30	6.70
G2246	1/5	1080	208-230	CWLE	1.60	6.51
G2244	1/4	1075	208-230	CWLE	1.70	6.70
G2245	1/4	1075	208-230	CCWLE	1.70	6.70

Five C-Frame Motors

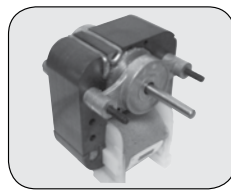
These single-speed, 3000 RPM motors feature an open enclosure, sleeve bearings, and are thermally protected, UL recognized and CSA certified.



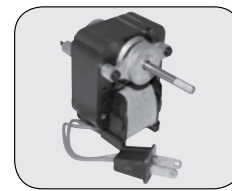
K141



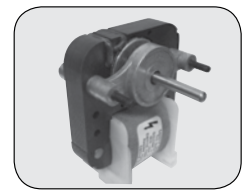
K142



K143



K144



K145

General Replacements

FASCO STOCK #	FASCO MFG #	HP	VOLTS	RPM	AMPS	ROT	SPDS	BEARINGS	“A” DIM	SHAFT
K141	7158-1090	1/70	120	3000	.65	CW	1	SLV	Stack 1.15	1.0 X .1814 X 0.75
K142	7158-1091	1/70	120	3000	.63	CW	1	SLV	Stack 1.00	.1814 X 1.00
K143	7158-1092	1/70	240/220	3000	.28	CW	1	SLV	Stack 1.00	.1814 X 1.00
K144	7158-1093	1/40	120	3000	1.0	CCW	1	SLV	Stack 1.00	.2178 X 1.50
K145	7158-1393	1/250	115	3000	.53	CW	1	SLV	Stack .50	.1814 X 1.00