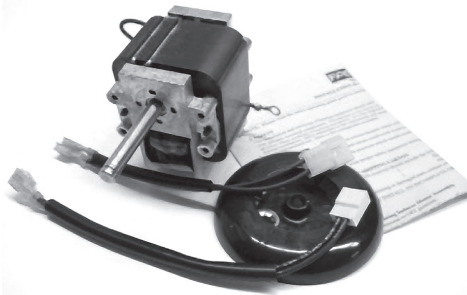


## New Product News

### Fasco Introduces New K674 C-Frame Motor Kit

Introducing Fasco's latest C-Frame General Replacement Motor, the K674, which comes in a kit complete with a black cooling fan, two harness adapters and instruction sheet. Like our wide variety of other C-Frame Motors available in stock (see pages 19-20 in your *Fasco Catalog 45*), the new K674 features an open enclosure, and is thermally protected, UL recognized and CSA certified.

For more information on the new K674 C-Frame Motor Kit, contact your Fasco Representative or call our Customer Service Department at 1-800-325-8313.



#### Model K674 Specifications

HP	1/22	Rotation	CW
Volts	115	Bearings	Ball
RPM	3000	"A" Dim	Stack 1.50
Amps	1.9	Shaft	1.93" x .3116" x .75"

### Additional Heat Shield Motors Now Available

Since our *Fasco Catalog 45* was published last year, a number of 1625 RPM Heat Shield Motors from GE Commercial Motors by Regal Beloit have become available. So you won't find them listed on pages 142-144 of *Catalog 45* with our other Heat Shield Motors, but these models are also in stock and available for immediate delivery.

Remember, Heat Shield Motors are a great choice for applications in ambient temperatures up to 70° C because they're designed for high heat environments. In addition to 1625 RPM models, they're also available in 1075 and 825 RPM, 1- and 2-speed, 1/8 to 3/4 HP models.



Heat Shield Motors also offer other great advantages including...

- Cooler, more efficient operation than competitive motors
- Improved reversing plug
- Increased lead length of 48"
- Improved shaft water thrower
- Rheem mounting holes with mounting hardware included
- Quick Connects on capacitor leads
- And more

For more information on these 1625 RPM Heat Shield Motors, contact your Fasco Representative or call our Customer Service Department at 1-800-325-8313.

#### General Replacements

FASCO STOCK #	HP	VOLTS	RPM	SPEEDS	Hz	BEARING	FLA @ NP	"C" DIM
3C004	3/4	208-230	1625	2	60/50	Ball	3.3	13.21
3C005	1/4	460	1625	3	60/50	Ball	0.7	10.81
3C006	1/3	460	1625	3	60/50	Ball	0.9	11.96
3C007	1/2	460	1625	2	60/50	Ball	1.1	12.46
3C008	3/4	460	1625	2	60/50	Ball	1.7	13.21

## **Congratulations to the Latest Gift Card Recipients in the New Fasco Rewards Program**

Congratulations to the following Fasco Rewards Program participants who will receive \$100, \$75 or \$50 gift cards from our May test drawing! Take the Fasco Rewards Test this month, and your name may be listed in a future issue!

- Marcia Allen
- Roger Bancroft
- Lori Cantoria
- Rhonda Evans
- Steve Fair
- Regina Ginez
- Jack Gross
- Terry Harwood
- Greg Johnson
- Vicki Johnson
- Catherine Lowe
- Paul McPhillips
- Jim Meyers
- Ginny Reid
- William Roser
- Andy Schroeder
- Chris Schroeder
- Marc Steger
- David Stejskal
- Elizabeth Todd
- Russ Wright

**PLEASE NOTE:**  
**All gift cards need to be used within 12 months.**

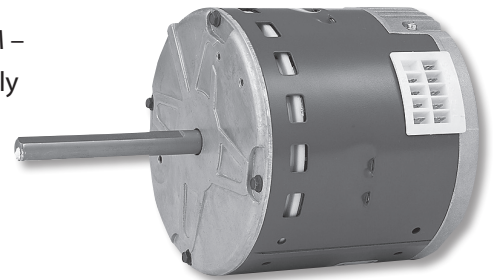
## **Answers to May 2012 Fasco Rewards Test**

1. D – All of the above
2. A – True
3. A – D2750
4. B – False
5. B – Temperature
6. D – All of the above
7. C – D802
8. D – All of the above
9. C – 1/3 HP
10. B – 12

## **Product News**

# **Raving about Saving: Why Business Customers LOVE the Evergreen CM – and the Money It's Helped Them Save!**

It's only been a year since we introduced Genteq's Evergreen CM – the world's first universal electrically commutated motor (ECM) for aftermarket light commercial heating and cooling applications. But since that time, we've been hearing rave reviews from companies that are seeing dramatically lower energy bills since the installation of their Evergreen CMs.



*Evergreen CM Motor*  
1/3, 1/2 & 3/4 HP  
**Coming Soon in 1 HP!**

That's because the Evergreen CM was designed to use up to 50% fewer watts than standard indoor Permanent Split Capacitor (PSC) blower motors, which allows the Evergreen CM to *instantly* upgrade the efficiency of most light commercial heating and cooling equipment.

Before the Evergreen CM, business owners had one option, and one option only, to have a more energy efficient HVAC system: Buy a brand new ECM system. Now the Evergreen CM gives them a much easier choice – upgrade their inefficient PSC motors with high-efficiency Evergreen CM motors that can start saving them money from day one, and mean dramatic cost savings over the life of the motors.

In upcoming issues of your *Fasco Rewards Distributor Newsletter*, we'll be bringing you case histories that highlight the real cost savings achieved by companies that have upgraded to Evergreen CM motors. We hope you will pass these success stories on to your customers to show them how they can save *their* customers money! In the meantime, though, remember that the Evergreen CM motor offers efficiencies up to 80%, quieter operation, and is available for 277 V systems, counter clockwise or clockwise rotation, and outputs of 1/3 HP (Stock #6703), 1/2 HP (Stock #6705) and 3/4 HP (Stock #6707).

If you'd like more information right now on the Evergreen CM, however, please contact your Fasco Representative or our Customer Service Department at 1-800-325-8313.

 Printed on recycled paper.

**REGAL**