

MOTOR WARNINGS & CAUTIONS





IMPORTANT INFORMATION

Please Read Carefully



This catalog is not intended to provide operational instructions. Appropriate GE Commercial Motors by Regal-Beloit instructions provided with the motor and precautions attached to the motor should be read carefully prior to installation, operation and/or maintenance of the equipment. Injury to personnel or motor failure may be caused by improper installation, maintenance or operation.

The following  and  information is supplied to you for your protection and to provide you with many years of trouble free and safe operation of your GE Commercial Motors by Regal-Beloit product:



- Disconnect power and lock out driven equipment before working on a motor.
- Always keep hands and clothing away from moving parts.
- The lifting support on the motor is not to be used to lift the entire machine. Only the motor attached directly to the support may be safely lifted by the support.
- Install and ground per local and national codes.
- Discharge all capacitors before servicing a single phase motor.
- Misapplication of a motor in a hazardous environment can cause fire or an explosion and result in serious injury. Only the end user, local authority having jurisdiction, and/or insurance underwriter are qualified to identify the appropriate class(es), group(s), division and temperature code. GE Commercial Motors by Regal-Beloit personnel can not evaluate or recommend what motors may be suitable for use in hazardous environments. If a motor is nameplated for hazardous locations, do not operate the motor without all of the grease and drain plugs installed.
- Never attempt to measure the temperature rise of a motor by touch. Temperature rise must be measured by thermometer, resistance, imbedded detector or thermo-couple.
- Motors with automatic reset thermal protectors will automatically restart when the protector temperature drops sufficiently. Do not use motors with automatic reset thermal protectors in applications where automatic restart will be hazardous to personnel or equipment.
- Motors with manual reset thermal protectors may start unexpectedly after the protector trips when the surrounding air is at +20°Fahrenheit or lower. If the manual reset protector trips, disconnect motor from its power supply. After the protector cools (five minutes or more), it can be reset and power may be applied to the motor.
- Connect all protective device leads, marked P1, P2, etc., per instructions supplied with the motor.
- Operation of a motor at other than its nameplate rating may result in fire, damage to equipment or serious injury to personnel.
- For safety, Buyer or User should provide protective guards over all shaft extensions and any moving apparatus mounted thereon. The User is responsible for checking all applicable safety codes in his area and providing suitable guards. Failure to do so may result in bodily injury and/or damage to equipment.



- Consult qualified personnel with questions and all electrical repairs must be performed by trained and qualified personnel only.
- For motors nameplated as "belted duty only", do not operate the motor without belts properly installed.
- Motors and/or driven equipment should not be operated faster than their rated speed.
- For inverter applications, follow the inverter manufacturer's installation guidelines.
- Make sure the motor is properly secured and aligned before operation.

IMPORTANT INFORMATION

Resale of Goods

In the event of the resale of any of the goods, in whatever form, Resellers/Buyers will include the following language in a conspicuous place and in a conspicuous manner in a written agreement covering such sale:

The manufacturer makes no warranty or representations, express or implied, by operation of law or otherwise, as to the merchantability or fitness for a particular purpose of the goods sold hereunder. Buyer acknowledges that it alone has determined that the goods purchased hereunder will suitably meet the requirements of their intended use. In no event will the manufacturer be liable for consequential, incidental or other damages. Even if the repair or replacement remedy shall be deemed to have failed of its essential purpose under Section 2-719 of the Uniform Commercial Code, the manufacturer shall have no liability to Buyer for consequential damages.

Resellers/Buyers agree to also include this entire document including the warnings and cautions above in a conspicuous place and in a conspicuous manner in writing to instruct users on the safe usage of the product.

This information should be read together with all other printed information supplied by Marathon Electric.

For more information contact: RBC Manufacturing Corporation, Subsidiary of Regal-Beloit Corporation, 100 E. Randolph St., Wausau, WI 54401
Phone: 715-675-3311 or Fax: 715-675-8030.



GE Commercial Motors

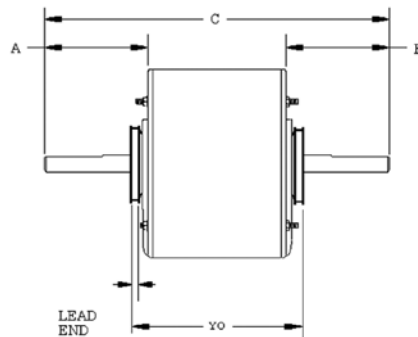
By Regal-Beloit

NOTES

Note #	Description
1	5/8" shaft adapter
2	6" shaft extension with 2 flats 90° apart
3	Capacitor supplied with motor
4	Sleeve bearing
5	Designed for 60° C ambient
6	Designed for 65° C ambient
7	Length adapter kit included
8	Mounting accessories and resilient ring for pulley end are not included. Opposite shaft-end endshield is open. Use accessory kit 161L131AB1 for resilient ring mounting.
9	Opposite shaft-end endshield is open
10	Shaft-endshield is open
11	Shaft extension 3/8" diameter
12	Designed for 50 or 60 Hz operation
13	TENV construction
14	Ball bearing

Dimension:

- A Shaft length on lead end
- B Shaft length opposite lead end
- C Overall length of motor including shaft
- YO Distance between the outer edges of the mounting grooves for the cushion ring



GE Commercial Motors

By Regal-Beloit

INTRODUCING

Evergreen CM[®]



Features

- 277V AC single-phase input, 50/60 Hz
- Available in 1/3, 1/2, 3/4, and 1 HP ratings
- CCW or CW rotation models available
- 5 discrete speeds using 24VAC (3 using 18VDC) signal inputs
- Variable Speed Control when used with an ECM PWM speed controller.
- Operating range of 600-1200 rpm
- UL & CSA recognized

Benefits

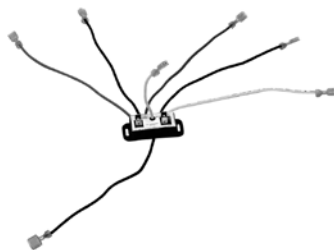
- Efficiency up to 80%, 25% to 50% Watt Savings vs. PSC
- Ready for Building Automation System Control interface using a PWM speed controller
- Soft Start and Off Ramp = quieter operation
- Constant torque with better External Static Pressure Control than standard PSC motors
- Improved High Static CFM performance
- Proven Reliability by Genteq

Applications

- Designed for direct-drive blower replacement applications in commercial building systems such as Series VAV boxes and packaged heat pumps



For further details, visit www.thedealertools.com



Life-Line™ LIFE-LINE CAPACITOR KIT FEATURING genteq™

LIFE-LINE - GENTEQ CAPACITORS

Part Number	Description
LCKG-001	Complete Kit Featuring Genteq Capacitors

Part Number	uF Rating	Voltage	Case Dia	Case Hgt	Qty in Kit
27L1024S	5uF	440 VAC	1.25" Oval	2.12"	1 Cap
27L1027S	10uF	440 VAC	1.25" Oval	2.88"	1 Cap
97F9625S	15uF	440 VAC	1.25" Oval	4.75"	1 Cap
97F9978S	25/5uF	440 VAC	2.00" Round	3.88"	1 Cap
97F9851S	45/5uF	440 VAC	2.50" Round	3.88"	1 Cap
97F9874S	55/7.5uF	440 VAC	2.50" Round	4.75"	1 Cap

Part Number	Description	Qty
LCK-SBA-001	Capacitor Mounting Hardware Kit*	1 Kit
LCK-DBA-001	Device Mounting Hardware Kit**	1 Kit
CID-001	Life-Line "Spider" Device***	2 Devices

Life-Line™ LIFE-LINE CAPACITOR KIT FEATURING PROLINE™ CAPACITORS

LIFE-LINE - PROLINE CAPACITORS

Part Number	Description
LCKP-001	Complete Kit Featuring PROLINE Capacitors

Part Number	uF Rating	Voltage	Case Dia	Case Hgt	Qty in Kit
PB050E000A440BAS	5uF	440 VAC	1.25" Oval	2.12"	1 Cap
PB100E000A440CAS	10uF	440 VAC	1.25" Oval	2.88"	1 Cap
PB150E000A440EAS	15uF	440 VAC	1.25" Oval	4.75"	1 Cap
PB250Z050S440DAS	25/5uF	440 VAC	2.00" Round	3.88"	1 Cap
PB450Z050T440DAS	45/5uF	440 VAC	2.50" Round	3.88"	1 Cap
PB550Z075T440EAS	55/7.5uF	440 VAC	2.50" Round	4.75"	1 Cap

Part Number	Description	Qty
LCK-SBA-001	Capacitor Mounting Hardware Kit*	1 Kit
LCK-DBA-001	Device Mounting Hardware Kit**	1 Kit
CID-001	Life-Line "Spider" Device***	2 Devices

*The Capacitor Mounting Hardware Kit (LCK-SBA-001) includes:
 (1) 1.25" Oval Capacitor Bracket, (1) 2.00" Round Capacitor Bracket,
 (1) 2.50" Round Capacitor Bracket, and (4) #6 x 1/2" Phillips Pan Head Self Tapping Screws

**The Device Mounting Hardware Kit (LCK-DBA-001) includes:
 (1) 1.25" Oval Device Bracket, (1) 2.00" Round Device Bracket,
 and (1) 2.50" Round Device Bracket

***The Complete Life-Line Capacitor Kit comes with 2 Life-Line "Spider" Devices (CID-001) with replenishment quantity in 4-packs sold separately (LCK-CID-001).